

#### ◆ Faculty of Decorative Arts (cont.)

- **Master's Degree Programs:**
  - Jewelry Design
- **Doctoral Degree Program:**
  - Design Arts\*

#### ◆ Faculty of Arts

Degree Programs offered

- **Bachelor's Degree Programs:**
  - Thai
  - English
  - French
  - German
  - Eastern Asian Languages
  - History
  - Geography
  - Social Sciences for Development
  - Thai Music
  - Philosophy
  - Information and Library Science
  - Asian Studies
  - Drama
- **Master's Degree Programs:**
  - Thai
  - Thai for Career Development
  - History
  - Educational Informatics
- **Doctoral Degree Program:**
  - Thai

#### ◆ Faculty of Education

Degree Programs offered

- **Bachelor's Degree Programs:**
  - Five-Year Programs
    - Elementary Education
    - Early Childhood Education
  - Thai
  - English
  - Social Studies
  - Teaching Chinese as a Foreign Language
- Four-Year Programs
  - Lifelong Education
  - Educational Technology
  - Psychology
  - Sports Science

#### ◆ Faculty of Education (cont.)

- **Master's Degree Programs:**
  - Lifelong Education and Human Development
  - Educational Administration
  - Teaching English
  - Curriculum and Supervision
  - Curriculum and Instruction
  - Teaching Thai Language
  - Educational Technology
  - Teaching Social Studies
  - Development Education
  - Special Education Psychology
  - Community Psychology
- **Doctoral Degree Programs:**
  - Lifelong Education and Human Development
  - Educational Administration
  - Curriculum and Instruction
  - Development Education

#### ◆ Faculty of Science

Degree Programs offered

- **Bachelor's Degree Programs:**
  - Mathematics
  - Biology
  - Chemistry
  - Physics
  - Statistics
  - Environmental Science
  - Computer Science
  - Microbiology
  - Applied Mathematics
  - Information Technology
- **Master's Degree Programs:**
  - Mathematics
  - Mathematics Study
  - Applied Statistics
  - Biology
  - Microbiology
  - Chemical Studies
  - Organic Chemistry
  - Analytical Chemistry
  - Physics

#### ◆ Faculty of Science (cont.)

- **Master's Degree Programs:**
  - Information Technology
  - Environmental Science
  - Forensic Science
- **Doctoral Degree Programs:**
  - Organic Chemistry
  - Physics
  - Mathematics\*
  - Biology
  - Microbiology
  - Information Technology
  - Bioinorganic Chemistry\*

#### ◆ Faculty of Pharmacy

Degree Programs offered

- **Bachelor's Degree Program:**
  - Pharmacy
- **Master's Degree Programs:**
  - Health Informatics
  - Consumer Protection in Public Health
  - Social and Administrative Pharmacy
  - Clinical Pharmacy
  - Pharmaceutical Sciences
  - Health Service System Management
- **Doctoral Degree Programs:**
  - Social and Administrative Pharmacy
  - Pharmaceutical Engineering\*
  - Pharmaceutical Technology
  - Pharmaceutical Sciences

#### ◆ Faculty of Engineering and Industrial Technology

Degree Programs offered

- **Bachelor's Degree Programs:**
  - Petrochemicals and Polymeric Materials
  - Advanced Materials and Nanotechnology
  - Bioprocess Engineering
  - Industrial Engineering
  - Management Engineering and Logistics
  - Mechanical Engineering
  - Chemical Engineering
  - Electronic and Computer System Engineering
  - Food Technology

#### ◆ Faculty of Engineering and Industrial Technology (cont.)

- **Bachelor's Degree Programs:**
  - Biotechnology
  - Engineering Business
- **Master's Degree Programs:**
  - Food Technology
  - Biotechnology
  - Polymer Science and Engineering
  - Engineering Management
  - Energy Engineering
  - Chemical Engineering
- **Doctoral Degree Programs:**
  - Polymer Science and Engineering\*
  - Food Technology
  - Biotechnology
  - Energy Engineering
  - Chemical Engineering

#### ◆ Faculty of Animal Sciences and Agricultural Technology

Degree Programs offered

- **Bachelor's Degree Programs:**
  - Animal Sciences and Agricultural Technology
    - Aquatic Animal Production Technology
    - Crop Production Technology
- **Master's Degree Program:**
  - Animal Science

#### ◆ Faculty of Music

Degree Programs offered

- **Bachelor's Degree Programs:**
  - Performance
  - Jazz Studies
  - Commercial Music
- **Master's Degree Program:**
  - Music Research and Development

#### ◆ Faculty of Information and Communication Technology

Degree Programs offered

- **Bachelor's Degree Programs:**
  - Business Information Technology
  - Information Technology for Design
  - Communication Arts



#### ◆ Faculty of Management Science

Degree Programs offered

##### ● Bachelor's Degree Programs:

- Tourism Management
- Community Management
- General Business Management
- Business Management and English
- Marketing
- Hotel Management
- Public Administration
- Hotel Management\*

##### ● Master's Degree Programs:

- Public and Private Management
- Business Administration
- Public Administration

##### ● Doctoral Degree Program:

- Management

#### ◆ Silpakorn University

International College (SUIC)

Degree Programs offered

##### ● Bachelor's Degree Programs:

- Digital Communication Design\*
- Event and Leisure Marketing\*

##### ● Master's Degree Programs:

- Hotel and Tourism Management\*
- International Business\*

##### ● Doctoral Degree Program:

- International Business\*

#### ◆ Graduate School

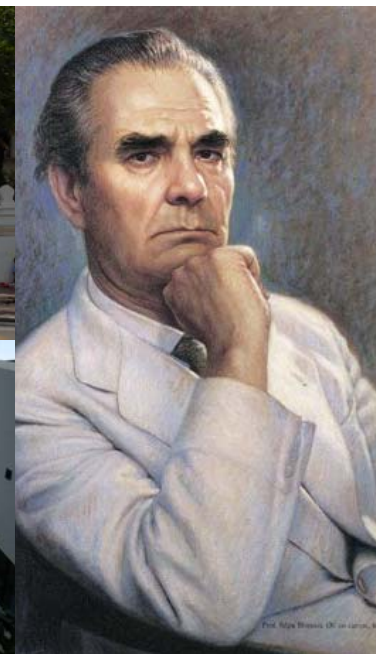
Degree Programs offered

##### ● Master's Degree Program:

- Educational Informatics

## Facts and Figures

Logo	:	“Ganesha”, one of the Hindu deities being symbolizing arts and crafts, is being Silpakorn University’s emblem.
Motto	:	“Art is long, Life is short”
Vision	:	“Silpakorn University is a Leading Creative University”
SU’s Colour	:	Veridian
Established	:	October 12, 1943
Type	:	Public University
President	:	Asst. Prof. Chaicharn Thavaravej
Logo	:	“Ganesha”, one of the Hindu deities that symbolizes art and craft, was chosen as Silpakorn University’s emblem.
Campus	:	Wang Tha Phra Campus, Sanam Chandra Palace Campus, Pherchaburi Information Technology Campus
Students	:	over 20,000 students (2014)
Staff	:	about 2,900 persons (2014)
Address	:	Silpakorn University 22 Borommarachachonnani Road, Taling Chan District, Bangkok 10170 Thailand
Telephone	:	+66 2 849 7500
Fax	:	+66 2 849 7518
Website	:	<a href="http://www.su.ac.th">http://www.su.ac.th</a>



มหาวิทยาลัยศิลปากร  
SILPAKORN UNIVERSITY



## About Silpakorn University

Silpakorn University was originally established as the School of Fine Arts under the Fine Arts Department in 1933. Its inception and development owe much to the almost lifetime devotion of Professor Silpa Bhirasri (Corrado Ferroczi), a famous Italian sculptor who was the founder of the University. The School was officially accorded a new status and named, Silpakorn University, on 12th October 1943. In 2013, Silpakorn University celebrated its 70th Anniversary as an educational establishment after becoming a fully-fledged university, and is now composed of 12 Faculties, 1 Graduate school and 1 College covering major fields of art, design, science and technology, health science, social science and humanities. The University is located at three main campuses, namely the Wang Tha Phra Campus in Bangkok, the Sanam Chandra Palace Campus in Nakhon Pathom Province and the Phetchaburi Information Technology Campus in Phetchaburi Province. The University has constantly developed with a vision that “Silpakorn University is a leading creative university” to produce qualified graduates with intelligence, creativity, morality and a sense of responsibility towards themselves, society and the nation. As our promise, Silpakorn University will pursue our strong determination to promote and develop the University for reaching a higher global standard as well as enhancing the academic services for our communities and society evermore.

## Campuses

### Wang Tha Phra

Wang Tha Phra was the University’s first founding campus and occupies a small part of the inner city of Bangkok known as Rattanakosin Island. Located opposite to the Grand Palace and covering the area of 8 Rai, the campus was once the royal pavilion of H.R.H. Prince Narisaranuvattivongse and named “Wang Tha Phra”. On its western side also flows the famous Chao Phraya River whose deltaic expanse covers a large part of central Thailand.



### Sanam Chandra Palace Campus



In 1968 the Royal Thai Ministry of Education granted permission for Silpakorn University to include additional majors, which led to the establishment of the Sanam Chandra Palace Campus in Nakhon Pathom, west of Bangkok. Sanam Chandra Palace Campus is located in the area of Sanam Chandra Palace which was once the royal pavilion of King Rama VI of Chakri Dynasty and covering a total area of 440 Rai.



## Office of the President, Taling Chan

With the ever increasing numbers of students each year and limited space at the Wang Tha Phra campus, Silpakorn University decided to create the Office of the President at 22 Borommaratchachonnani road in Taling-Chan, resulting in more free space for students in Wang Tha Phra Campus. Now, Taling Chan Campus is home for Faculty of Music, Silpakorn University International College (SUIC) and some other departments are also located.



## Phetchaburi Information Technology Campus

Phetchaburi Information Technology Campus is located at Moo 3, Chaam – Pranburi Road, Sampraya District in Phetchaburi Province and it covers a total area of 820 Rai. The campus is also close to the seaside provinces of the western region of Thailand which are famous for tourism.

## Faculties and Offered Programs

Silpakorn University consists of 12 Faculties, 1 Graduate school and 1 College, and offers undergraduate, postgraduate, and higher degree research courses (Masters and PhD) in the many fields as below;

### ◆ Faculty of Painting Sculpture and Graphic Arts

Degree Programs Offered

- **Diploma's Degree Program:**
  - Visual Arts
- **Bachelor's Degree Program:**
  - Visual Arts
- **Master's Degree Programs:**
  - Visual Arts
  - Art Theory
  - Visual Arts Education
- **Doctoral Degree Program:**
  - Visual Arts

### ◆ Faculty of Architecture

Degree Programs Offered

- **Bachelor's Degree Programs:**
  - Architecture
  - Thai Architecture
- **Master's Degree Programs:**
  - Urban Design
  - Thai Architecture
  - Architecture
  - Construction Project Management
  - Computer-aided Architectural Design
  - History of Architecture
  - Vernacular Architecture
  - Urban and Environmental Planning
  - Landscape Architecture
  - Architectural Heritage Management and Tourism\*
- **Doctoral Degree Programs:**
  - Architectural Heritage Management and Tourism\*
  - Vernacular Architecture

### ◆ Faculty of Archaeology

Degree Programs Offered

- **Bachelor's Degree Programs:**
  - Archaeology
  - Art History
  - Anthropology
  - Thai
  - English
  - French
- **Master's Degree Programs:**
  - Archaeology
  - Art History
  - Epigraphic Studies
  - Sanskrit
  - Cultural Resource Management
  - Archives and Records Management
- **Doctoral Degree Programs:**
  - Sanskrit
  - Epigraphic Studies
  - Archaeology
  - Art History

### ◆ Faculty of Decorative Arts

Degree Programs Offered

- **Bachelor's Degree Programs:**
  - Interior Design
  - Visual Communication Design
  - Product Design
  - Applied Art Studies
  - Ceramics
  - Jewelry Design
  - Fashion Design
- **Master's Degree Programs:**
  - Interior Design
  - Visual Communication Design
  - Product Design
  - Applied Art Studies
  - Ceramics

P.S. : \* (International Program)